

Ferrite Cores

Split Cores

SCT TYPE

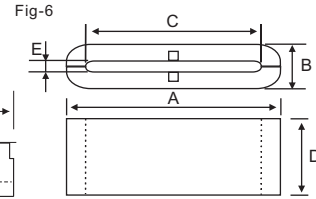
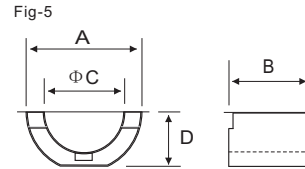
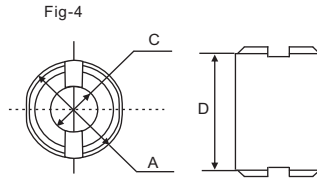
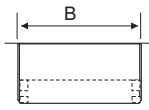
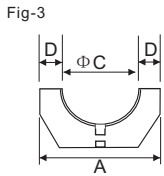
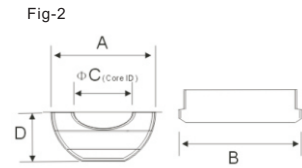
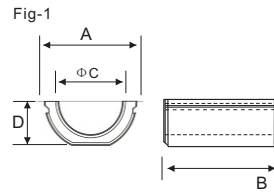
SCFS TYPE

ORDERING CODE

SCH 18×28×6
(1) (2) (3) (4)

(1) Type Code (3) B Size

(2) A Size (4) C Size



No	Specifications	Fig	Dimensions:mm				
			A	B	ΦC	D	E
1	SCT 5A	5	10.5±0.6	5±1	5.5±0.5	5.55±0.5	
2	SCH 60	2	18±1	28±1	6±0.8	8.5±0.5	
3	SCH 70T	2	13±1	28±1	7±0.8	6.2±0.5	
4	SCH 80T	2	16±1	32±1	8±0.8	7.7±0.5	
5	SCH 100T	2	18±1	28±1	10±0.8	8.3±0.5	
6	SCH 110C	4	18±1	27.5±1	11±0.8	8.2±0.5	
7	SCH 140C	2	22±1	29±1	14±0.8	10.3±0.5	
8	SCH 170B	3	34±1	44±1.5	17.0±0.5	8.5±0.4	
9	SCH 170T	2	26.5±1	29±1	17±0.8	13±0.8	
10	SCH 190T	2	27±1	29±1	19±0.8	13±0.8	
11	SCH 20T	1	35±1	40±1	20±0.8	17.5±0.8	
12	SCFS 35X10X28X15-1.6	6	35±1	10±0.5	28±0.8	15±0.6	1.6±0.4
13	SCFS 51.5X10X44X15-1.6	6	51.5±1	10±0.5	44±1	15±0.6	1.6±0.4